



14th - 15th
September 2024

SUPPLEMENTARY REGULATIONS





Organising Club



Title Sponsor



Recognised Club

CHAMPIONSHIPS



EVENT SPONSORS



CHAMPIONSHIP SPONSORS



SUPPORTERS & PARTNERS



Another Day In Orange

M&H PHOTOGRAPHY



BE THE CHANGE

HERE'S HOW YOU CAN HELP TO MAKE OUR SPORT MORE SUSTAINABLE

SPILLAGES



CARRY DRIP TRAYS,
MATTING AND
SPILL KITS

TRAVEL



POOL EVENT TRAVEL
AND CONSIDER LOCAL
SUSTAINABLE HOTELS

RECYCLE



USE RECYCLING FACILITIES
AT VENUES AND NEAR
HOME IF POSSIBLE

EDUCATION



REVIEW MOTORSPORT
UK POLICY AND
TRAINING

To find about more about sustainability in motorsport scan the QR code
<https://www.motorsportuk.org/about-us/environmental-sustainability/>





**OVER 200 NEW AND USED VEHICLES
IN STOCK TO BUY OR RENT.**

WHY LOOK ANY FURTHER?

**HILLS HAVE ALL YOUR CAR AND COMMERCIAL
VEHICLE NEEDS COVERED!**

HILLS FORD



- New Ford Car and Van Sales
- Approved Used Cars
- Collection and Delivery
- All makes Servicing, Tyres and MOT
- Roadside Assistance and Recovery from just £29.99 a year when you have a service
- Motability
- Service Plans

Malvern 01684 892 345
Kidderminster 01562 820 028
hillsford.co.uk



**HILLS FORD
Transit Centre**

- Full Range of New Ford Commercial Vehicles
- Service Plans
- Collection and Delivery
- Ford Servicing available at Worcester Road
- Ford Service Pro Aftersales Programme

Mustow Green
01562 777 077
hillsford.co.uk/transit-centre



PILOTE

- Licenced Pilote and Ford New Campervans and Motorhomes
- Used Vans, Pick-Ups and Campervans
- Quality Used Cars
- Service Plans

Mustow Green
01562 777 077
hillsautomotive.co.uk

BROOKHIRE

- Cars, Campervan and Commercial rentals
- Short, Medium and Long Term Rental
- Minibus Hire
- Campervan Hire – ask about ‘Try Before You Buy’
- Business Hire
- Continental Hire
- Weekend hire

Malvern 01684 210 512
Kidderminster 01562 549 730
brookhire.co.uk

Visit us on social media today





CONTENTS

FOREWORD	7
ANNOUNCEMENT	8
JURISDICTION	8
AUTHORISATION	8
ORGANISATION	8
OFFICIALS	12
COMPETITION LIAISON OFFICERS	14
JUDGES OF FACT AND DRIVING STANDARDS OFFICERS	14
ELIGIBILITY	14
PROGRAMME	16
ROUTE AND EVENT FORMAT	17
SUBJECTIVE ROUTE NOTES AND RECONNAISSANCE	18
VEHICLE TRACKING - RECCE SPORTTRAXX AND RALLY TRANSPONDER	21
CLASSES	19
AWARDS	22
ENTRIES	24
SERVICE	27
REFUEL AND FUEL	30
IDENTIFICATION	31
CONTROLS, TIMINGS AND PENALTIES	33
RESULTS	33
INSURANCE - REIS	34
DOCUMENTATION	35
SCRUTINEERING AND NOISE	35
SAFEGUARDING	35
ENVIRONMENT AND SUSTAINABILITY	35
TYRES	36
ACKNOWLEDGMENTS	37

PLAY YOUR PART

HERE'S HOW YOU CAN HELP TO MAKE OUR SPORT MORE SUSTAINABLE

RECYCLE



USE RECYCLE BINS AND PICK UP YOUR RUBBISH

TRAVEL



CAR SHARE WITH FRIENDS OR USE PUBLIC TRANSPORT IF YOU CAN

COMMUNITY



BUY LOCALLY TREAT EVERYONE WITH RESPECT

FOOD AND DRINK



CONSIDER PLANT-BASED OPTIONS AND AVOID SINGLE USE ITEMS

To find out more about sustainability in motorsport scan the QR code <https://www.motorsportuk.org/about-us/environmental-sustainability/>



@ourmotorsportuk | #ourmotorsportuk



NEVER RISK YOUR OWN SAFETY



Spectate Safely

A safe rally is a good rally

If one car goes off, the next might too. If you have to assist then always ensure that one person acts as lookout.

#rallysafety

[motorsportuk.org/rallysafety](https://www.motorsportuk.org/rallysafety)



SPECTATE SAFELY!

- Be alert! Always expect the unexpected.
- Stay at the designated spectator areas.
- Remember that in an accident anything can happen.
- Always follow the instructions of the marshals.

**YOUR SAFETY
YOUR LIFE**



[motorsportuk.org](https://www.motorsportuk.org)
#rallysafety



LEAVE THE DRONE AT HOME



Spectate Safely

Your safety - your life

#rallysafety

[motorsportuk.org/rallysafety](https://www.motorsportuk.org/rallysafety)



Name of the Event:	Hills Ford Stages
Organising Club:	Cheltenham Motor Club
Date of the Event:	14 th - 15 th September 2024
Event Type:	Interclub Closed Road Stage Rally

FOREWORD

Welcome to the fourth running of the Hills Ford Stages, formerly the 3 Shires Stages. The organising team that worked so hard to make the 2023 event such a success, has been enhanced. We would like to thank Hills Ford for their continued support for the event. With the enthusiasm and support from the local residents and communities, the continued support of the three county councils, alongside Ledbury Town Council and all the parishes, wards and districts, we are committed to delivering a high quality event.

We have planned a two-day event, beginning with a ceremonial start in Ledbury's historic marketplace, immediately followed by a stage run twice on Saturday afternoon. There will be five Sunday stages, each run twice. This year will see the event venture into some areas not previously used. The rally will be based at the Much Marcie Showground, just 10 minutes' drive from Ledbury Town Centre.

We also welcome four championships to this year's Hills Ford Stages - The Motorsport UK Protyre Asphalt Championship, the HRCR Stage Masters Challenge, the HRCR Mini Cup and the CMSG Stage Rally Championship. It is a privilege for us to be part of all these Championships and we look forward to welcoming the competitors from within them.

We are extremely grateful to the many clubs that are assisting in the planning and running of the event. Thank you!

Further information on the ceremonial start, camping sites and spectator areas will be available on the Sportity app, (channel Code 24HFSComp) as well as on the Hills Ford Stages website hillsfordstages.co.uk Regular updates will be posted on the Hills Ford Stages Facebook page.

We look forward to welcoming everyone to the event and hope you have an enjoyable, successful and safe weekend.

Thank you from all the Organising Team

The Hills Ford Stages



SR1: ANNOUNCEMENT

Cheltenham Motor Club will organise and promote an Interclub Permit Closed Road Special Stages Rally on Saturday 14th and Sunday 15th September 2024. The event will be known as the Hills Ford Stages. Rally HQ will be based at Much Marcle Memorial Hall, Ledbury, HR8 2LY

SR2: JURISDICTION

The event will be held under the General Regulations of Motorsport UK (incorporating the Provisions of the International Sporting Code of the FIA), the Championship Regulations listed in Article 4 (unless modified by these Supplementary Regulations), these Supplementary Regulations and any written instructions that the organisers may issue.

SR3: AUTHORISATION

CAO Authorisation: TBA

Motor Race Order: TBA

Motorsport UK Permit: Hills Ford Stages 134499

SR4: ORGANISATION

Championships and Titles for which the Rally counts

Championship	Permit number
Motorsport UK Protyre Asphalt Championship	CH2024/RALLY006
The HRCR Stage Masters Challenge	CH2024/RALLY026
The HRCR Mini Cup	CH2024/RALLY022
CMSG Stage Rally Championship	CH2024/RALLY031



<https://webapp.sportity.com/channel/24HFSComp>



Sportity

For direct event information please download the Sportity app and insert this password:

24HFSComp

Sportity app is available in

Available on the App Store | Get it on Google play

www.sportity.com



New All-Electric Explorer

SCAN ME 

Starting from £39,875
Recommended OTR Price

HILLS FORD
Kidderminster | Malvern





Our team of experts can manage any project and provide our clients with effective solutions and peace of mind. Our clients have come to expect an approachable team that's always on hand, 24 hours a day 7 days a week. We want our customers to be satisfied with our work, which is why we provide open communication channels throughout the duration of each day.

hawkgroupservices.com



At OnthepacenoteUK we pride ourselves by providing a professional reliable service.

Craig & Killian have over 100 WRC starts between them with a vast amount of knowledge and current experience of making pacenotes.

WE HAVE A RANGE OF ROUTE NOTES AVAILABLE TO YOU

- ✓ 6 & 1 Fastest choice of direction
- ✓ 1-9 choice of direction
- ✓ Descriptive
- ✓ Digital DVD & DVD
- ✓ We can supply a sample of any system on request

TO ORDER SIMPLY:

visit our website: www.onthepacenote.co.uk

Email: onthepacenoteuk@gmail.com Call Craig: 07977 234 790





ROLE	NAME	CONTACT
MSUK SAFETY DELEGATE	Tony Jackson	
MSUK STEWARD	Brian Hemmings	
EVENT STEWARD	Mike Broad	
EVENT STEWARD	Kelvyn Davies	
EVENT DIRECTOR	Kevin Smith	
CLERK OF THE COURSE	Dan Lister	
DEPUTY COC	Keith Richings	
DEPUTY COC	Simon Marks	
DEPUTY COC	Pete Hennes	
SECRETARY OF THE MEETING	Anouska Lysandrou	secretary@hillsfordstages.co.uk
SAFETY OFFICER	Pete Self	
DEP SAFETY OFFICER	Rod Coleman	
SPECTATOR SAFETY OFFICER	Clive Chinnick	
DEPUTY SPECTATOR SAFETY	Lee Hampton-Whitehead	
ENTRIES SECRETARY	Julie Richings	entries@cheltmc.com
CHIEF MARSHAL	Adam Kettley	
CHIEF MEDICAL	Dr Stuart Hateley	
SAFEGUARDING OFFICER	Kevin Smith	
MEDIA OFFICER	Steve Andrews	
PRESS OFFICER & MEDIA SIGN-ON	Paul Willets	
COMPETITOR LIAISON OFFICERS	Eifion Jones Ryland James	
CHIEF TIMEKEEPER	Richard Blackshaw	
CHIEF SCRUTINEER	Martin Ford	
ENVIROMENTAL SCRUTINEER	Rob John	
HIGHWAYS LIAISON OFFICER	Bob Blackstock	
RESIDENT LIAISON MANAGER	Kim Butcher	
LEAD RADIO CONTROL	Simon Marks	
RADIO CONTROL C	Kevin Hughes	
RADIO CONTROL A	Bob Clark	
RADIO CONTROL BACKUP	Lucy Fryer	
EQUIPMENT OFFICER	Mike Lister	
RECCE MANAGER	Martin Douglas	

If you wish to contact any of the event officials, please send an email to secretary@hillsfordstages.co.uk and we will forward it to the appropriate person



FR /_{Jmp} 80 ! ML → KR + Ć

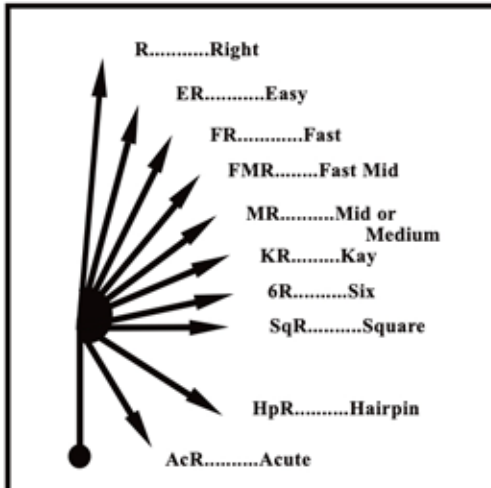
Fast Right over Jump 80 (yds) Caution Medium Left into Kay Right and Flat Crest

2R /_{Jmp} 80 ! 4L → 5R + Ć

Two Right over Jump 80 (yds) Caution Four Left into Five Right and Flat Crest

These notes are designed to describe the road ahead, for a wide cross section of drivers and cars. They are not speed related, and must be interpreted according to road width, surface and conditions.

Bend Indication



Descriptive

1-9, 6 Fastest No 1st, Direction 1st etc. also available

Professional Notes by Professional People

Notes & Safety Video Available Mail Order Only

Directly from Patterson Pacenotes

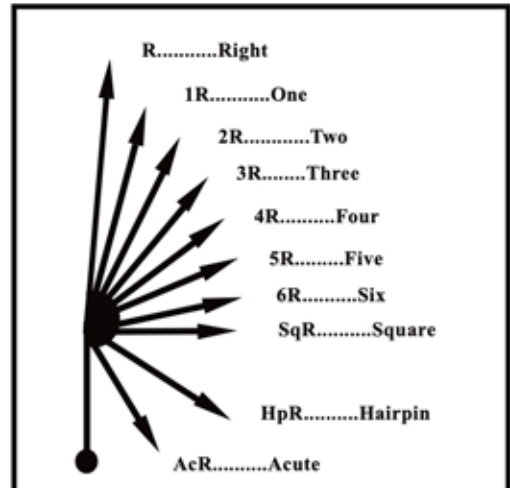
Tel 028 90 84411

Michael - 07818003364 Eddie - 07984687121

Email: sales@rallynews.net

or Order On-Line at

www.rallynews.net



Numbers



Previous Winners of the Hills Ford (3 Shires) Stages

2019 - Martyn England/Dawn England Ford Fiesta R5+

2021 - Meirion Evans/Jonathan Jackson VW Polo R5

2023 - Mark Kelly/ Dai Roberts Skoda Fabia R5

SR5: COMPETITION LIAISON OFFICERS

Should competitors have any difficulty or query with rules, regulations, results, or any paperwork issued before or during the event please bring it to the attention of the Competitor Liaison Officers who can then help or resolve a potential problem. The CLOs will be available at Documentation and at varying times at the Start, Service Area, and the Finish of the event.

SR6: JUDGES OF FACT AND DRIVING STANDARDS OFFICERS

The Clerk of the Course will appoint Judges of Fact and Driving Standard Observers to adjudicate on infringements of these SRs and as per R24.7, R24.8 and R38. A list of these Judges will be on display on the official notice board and Sportity. The Chief Scrutineer will be Judge of Fact regarding vehicle eligibility. The start officials on all special stages will be empowered to judge whether a competitor has made a false start.

SR7: ELIGIBILITY

7.1 Competitors must hold a valid Motorsport UK Stage Rally Competition licence of Interclub Status or Higher and a valid club membership card (R 5.2).

7.2 The Hills Ford Stages has been inscribed on the Motorsport UK Fixture List and National Competitions with Authorised Foreign Participation (NCAFP) Calendar 2024. This will allow the participation of licence holders from other FIA recognised ASN's. Competitors and drivers who wish to take part in a competition organised abroad can only do so with the approval of their own ASN and organisers must be in possession of that approval before the competitor is allowed to compete.

7.3 All competitors must comply with one of the following:

- Fully elected member of the organising club
- Registered contender of the championships listed in the Championships 4.1
- Competitors whose club is a member of the following Association: - Association of West Midlands Motor Clubs - Association of South Western Motor Clubs - The Welsh Association of Motor Clubs - Association of Central Southern Motor Clubs

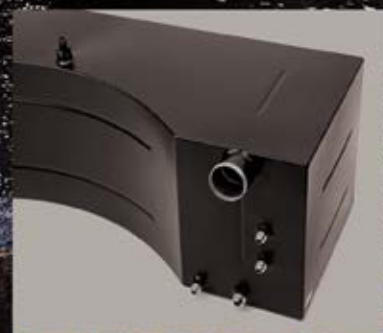
7.4 All competitors who are not eligible as per 7.3 are required to join Cheltenham Motor Club.

7.5 Membership of Cheltenham Motor Club will be available from the date of the event, until 31st December 2024, for the reduced sum of £10 per person. This can be applied for through the online entry form.



PREMIUM QUALITY

MOTORSPORT PRODUCTS



www.allisport.com

sales@allisport.com



+44 (0)1531 650350

**SR8: PROGRAMME**

	Date	Time
Regulations Published	9 th July 2024	
Entries Open	14 th July 2024	19:00
Entries Closed for Seeding	1st September 2024	23:59
Final Instructions Published	9 th September 2024	
Entry amendments must be completed by	10 th September 2024	23:59
Entries close	10 th September 2024	23:59
Service Park opens	13 th September 2024	12:00
Recce Signing On opens	13 th September 2024 14 th September 2024	13:00 08:00
Recce Signing On Closes	13 th September 2024 14 th September 2024	15:00 10:00
Reconnaissance of Stages	13 th September 2024 14 th September 2024	13:00-17:00 08:00-14:00*
Noise and Scrutineering	13 th September 2024 14 th September 2024	13:00-17:00 08:00-14:00
Rally Signing on opens	14 th September 2024	09:00
First Car leaves for Ceremonial Start	14 th September 2024	14:30
First Car restart on 15 th September	15 th September 2024	08:00
First Car due to Finish	15 th September 2024	16:10
Provisional Results Apox due time	15 th September 2024	18:30
Award Presentation – Location TBA	15 th September 2024	On results being declared Final

Any competitor who has not completed Scrutineering and Documentation within the above schedule times may be deemed a non-starter and replaced by a reserve. (H 30.1.1)

*Please note that due to road closures for stage set up, no access will be permitted for Stage 1 nor 2 after 12 noon on Saturday



SR9: ROUTE AND EVENT FORMAT

9.1 The route will contain 12 stages, comprising approximately 60 miles of closed public roads and 130 miles of public/private road link sections. There will be a Ceremonial Start on Saturday 14th September, followed by SS1 and SS2, which will run concurrently. Sunday 15th September will see a further 10 stages take place, consisting of five venues run twice.

9

9.2 The event takes place on Ordnance Survey Maps (1:50000) 149, 150 & 162. Competitors will be issued with all route information and their Final Instructions on the Sportivity App or via a link on the event website. Each competitor will be provided with a colour printed road book including a map book.

9.3 These documents will provide all information necessary to enable competitors to comply with R 33.1.

9.4 Rally HQ will be in Much Marcle Memorial Hall, Ledbury, HR8 2LY. A virtual notice board will be on the Sportivity App (Channel Code 24HFSComp).

9.5 Service will be at Much Marcle Showground, Rye Meadows, Much Marcle, Nr Ledbury, Herefordshire HR8 2LX. (///overcomes.allow.landed)

9.6 Documentation and signing on for reconnaissance will be at Much Marcle Garage (///workforce.hiring.probe) from 13:00 until 15:00 on Friday 13th September, or from 08:00 until 10:00 on Saturday 14th September. Documentation and signing on for the rally will be at Much Marcle Garage (///workforce.hiring.probe) from 09:00 to 14.30 on Saturday 14th September.

9.7 Competing cars will need to be presented to Noise Test and Scrutineering as per the maps in the Final Instructions. Noise location is ///boggles.ordinary.cushy (approx 1 mile from the show ground)

9.8 MC 0 (Saturday 14th September) will be at the Much Marcle Showground, as will MC2 (first control of Sunday 15th September)

9.9 All competitors must produce, on demand of the Entries Secretary or Clerk of the Course their Process Card, a valid competition licence, club membership card, entrant's licence (where applicable), championship registration card(s) and name and sign a declaration that they have insurance covering the parts of the event on the public highway as part of the entry process.

9.10 Competitors will leave the Service Area in seeded order and parade through the Ceremonial Start. Final details will be published in the Final Instructions

9.11 Entrants will be supplied with a Road Book at documentation giving details of Special Stages and the location of controls. This document will provide all the information necessary to enable competitors to comply with R6.1-3 and R26.1-8. Alternative routes to be used in the event of a blocked stage will also be included in an appendix at the end of the Road Book.



SR10: SUBJECTIVE ROUTE NOTES AND RECONNAISSANCE

10.1 Subjective route notes will be allowed on this event (R 25.9). They can only be purchased from either Patterson Pacenotes (Michael Patterson) or Onthepacenote.co.uk (Craig Parry) and be specific for this event. It is the competitors' responsibility to order and pay for these notes direct from their chosen supplier as the event organisers will not be involved in this process in any way.

10.2 In all instances, competitors are advised that the organisers accept no liability or responsibility for the use of the subjective route notes.

10.3 Competitors may conduct a reconnaissance of the stages on Friday 13th September and Saturday 14th September subject to a prescribed route and time schedule to write their own notes or familiarise themselves with purchased subjective route notes.

10.4 At recce signing on, recce car identification and a self-fill time card will be issued and the recce vehicle will be checked for compliance as below. Only 2 people are permitted to travel in a recce car. Should a crew member not be available to do the recce a substitute will be permitted if the rally organisers are notified in advance.

10.5 The recce car identification should be placed at the top of the windscreen on the near side and on the rear window.

10.6 The recce vehicle must be a standard car or pick up or 4x4 without a roll cage or sign-writing. Modified wheels are permitted. Competitors must pre-advise their recce car via the online entry from before the recce commences. All cars must be taxed, insured and MOT'd (if applicable) for the UK highway. Intercoms are not permitted.

10.7 All competitors will be tracked on the recce using the **SPORTTRAXX App**. You must download the **SPORTTRAXX App** before the recce starts so that you can be issued with log in details.

10.8 Crews will be allowed 2 passes of each stage venue in total. This can be over the 2 available recce time windows. Competitors can choose which order they drive each stage venue.

The recce time windows are:

13:00 – 17:00 on Friday 13th September. (Signing on available 13:00 – 15:00)

08:00 – 14:00 on Saturday 14th September. (Signing on available 08:00 – 10:00)

Please note Stage 1 / 2 closes at 12:00 noon on Saturday 14th September to facilitate stage set-up.

There is no alternative time to recce the stages.



You only need to sign on once, before you start your recce. Any competitor found on any special stage outside of these windows will be reported to the Clerk of the Course who may take action.

Traffic on stages before Friday 13th September will be checked by the Police and the Organisers. Any local competitors that may have to travel along the roads in the course of their normal daily business must apply to the entries secretary for an exemption.

10.9 There is a speed limit of 30mph on all stages, and in the opinion of the organisers, driving at excessive speed or causing inconvenience to local residents may be considered as bringing the sport into disrepute and their details passed to Motorsport UK. Judges of Fact will be appointed to carry out checks during the recce and the Clerk of the Course may issue penalties.

10.10 All crews should note on their time card the time they start and finish each stage. If required to stop during one of the stages by a Driving Standards Observer or Judge of Fact this card must indicate the time that the stage was started. If incorrect or blank, a report will be made to the Clerk of the Course. This card should be handed in at MCO when leaving service to go to the ceremonial start.

10.11 To avoid congestion, some competitors may be requested to start their recce at a specific stage venue. Whilst there is no mandatory route, you will be given instructions on the recommended route from the finish back to the start of each stage and a recce road book to use when not following rally route. If not following the recommended route you must not drive wrong direction on stages or use a route that crosses any stages.

10.12 Crews cannot go back and do parts of the stage multiple times; they must drive from start to finish. Any crew found using any part of a stage venue more than twice will be reported to the Clerk of the Course.

10.13 Chicanes may not be set up, but their location will be identified by the road book. It is the competitor's responsibility to identify the location of the chicanes.

10.14 The following penalties apply for any competitors found to be in breach of any of the Recce requirements detailed herein.

- First Offence - £50 fine or disqualification.
- Second Offence - disqualification.



SILVERSTONE RALLY SCHOOL

Training Champions since 1982

Our Courses

We run a range of experience days starting with just a taster of the thrill of rallying right up to spending a full day with us. We cater for youth experiences for children aged 14-17 and adult experiences for those aged 17+ with a full driving licence.



**Adrenaline
Experience**

£120

Per Person

6 people per car



Half Day

£185

Per Person

6 people per car



Full Day

£325

Per Person

6 people per car



1:1 Tuition

From
£195

For 30 mins

Completely bespoke

Corporate

We organise a range of bespoke days for you and your team catering for up to 20 people driving. We can facilitate half days and full days on site and have a number of extras you can add on such as the Wheel Change Challenge, Off-Roading and personalised trophies.

Get in touch for your next team building, stag do or party.

Rally Car Hire

Want to take it to the next level and compete on an actual rally? We have a fleet of 1 and 1.4 litre Micras waiting for you! We have a full arrive and drive package available so all you have to do is turn up and jump in - we'll sort out the rest.

Silverstone Rally School

Buckingham Road, Silverstone, NN12 8TJ

Go to www.silverstonerally.co.uk for more info | Call us on 01327857413



SR11: VEHICLE TRACKING - RECCE SPORTTRAXX AND RALLY TRANSPONDER

11.1 For the Recce each competitor will be required to download the Sporttraxx app before Friday 13th September and login with the code supplied to each competitor. The Sporttraxx app will be monitored by the organisers during the recce and each stage area will have a speed window put in place with a speed limit giving a notification of any over speeds.

11.2 In association with Sporttraxx and Onthepacenote.co.uk, the rally will operate a mandatory GPRS safety tracking system that will enable the speed and position of each competing vehicle to be monitored and logged. Before the start, all cars will be fitted with a tracking device by a member of the Sporttraxx team. The tracker will remain active throughout the event. This must be retained in the car until the finish of the event where it will be removed by the system providers.

11.3 Should you retire from the event, please return your tracking device to the CLO.

11.4 In the case of an accident where urgent medical attention is required, the following applies:

- The SOS display on the safety tracking device must be activated as soon as possible.
- When possible, the red "SOS" sign should immediately be displayed to the following cars and to any helicopter attempting to assist.
- As soon as possible, the red triangle must be placed in a conspicuous position on the same side of the road as the car at least 100 metres before the car's position, in order to warn following drivers, even if the car is off the road.
- Any crew which has the red "SOS" sign displayed to them, or which sees a car which has suffered an accident and the OK sign is not shown, shall immediately and without exception stop to render assistance. All following cars shall also stop. The second car at the scene shall proceed to inform the next radio point. Subsequent cars shall leave a clear route for emergency vehicles. All crews stopping under this procedure will be allocated a time.

11.5 Should it not be possible, or for whatever reason, to display the OK/SOS board in any of the above situations, this may be replaced by an evident and clearly understandable sign language shown by the crew outside of the car:

- An arm and thumb up to indicate "OK"
- Crossed arms above the head to indicate "SOS".

11.6 Any crew which is able but fails to comply with any of the above rules will be reported to the Clerk of the Course who may apply a one-minute penalty and may report the incident to Motorsport UK.

11.7 If the tracking device is damaged or not returned to the supplier, the competitor will be charged £300 by the supplier.



SR12: CLASSES

Cars will be split into the following classes, which the organisers reserve the right to amalgamate and/or allocate entrants to as appropriate.

CLASS	DESCRIPTION
B9	up to 1400cc two-wheel drive cars
B10	over 1400cc up to and including 1600cc two-wheel drive cars including FIA Rally 5 cars
B11	over 1600cc up to and including 2000cc two-wheel drive cars and FIA Rally4 cars
B12	over 1600cc up to and including 2000cc 4-cylinder 8 valve (normally aspirated)
B13	over 2000cc two-wheel drive cars including all FIA R3T cars
B14	over 2000cc four-wheel drive non-WRC cars, S2000, FIA Rally3 cars and any 4-wheel drive car not complying with Class B15 or Class R5
B15	Homologated or non-homologated current or former WRC cars, a derivative of WRC R5 or Rally2 not following FIA app J Art 261 (R5+ Rally 2+)
R2	Current and former FIA R2(B) cars (but not FIA Rally4 cars*)
R5	R5 Homologated and non-homologated cars built to FIA Appendix J Article 261 including FIA Rally2 and RRC (Homologated Specification)
H1	Historic Category 1 Rally Cars up to 31.12.67. All capacities
H2a	Historic Category 2 Rally Cars 1.1.68 – 31.12.74. All capacities 8 valves
H2b	Historic Category 2 Rally Cars 1.1.68 – 31.12.74. All capacities 16 valves (multi cam)
H3a	Historic Category 3 Rally Cars 1.1.75 – 31.12.81. All capacities 8 valves
H3b	H3b Historic Category 3 Rally Cars 1.1.75 – 31.12.81. All capacities 16 valve (multi cam)

SFP STORE

sfpstore.co.uk

Take the **stress**
out of buying **fibre**
optic transceivers



1G SFPs

10G SFPs

25G SFPs

40G SFPs

100G SFPs

Media Converters

Direct Attach Cables

Active Optical Cables

Fibre Optic Patch Leads

All our SFPs & AOC/DACs are coded in-house & are 100% vendor compatible. We offer great pricing, good stock levels & next day delivery as well as a custom logo solution with high-quality, heat-resistant labels.

✉ sales@sfpstore.co.uk

☎ 0800 915 4000



SR13: AWARDS

- 11.1 First, Second and Third Overall: Award to Driver and CoDriver.
- 11.2 First in each class, award to Driver and CoDriver.
- 11.3 The Gerry Langford Trophy Spirit of the Rally.
- 11.4 Those awarded First, Second or Third overall will not be eligible for class awards.
- 11.5 Additional awards may be presented, at the organisers' discretion.
- 11.6 Eligibility for an award will be established from the completed entry form and class entered, unless overruled by the scrutineer.

SR14: ENTRIES

- 14.1 Should the number of entries, overall or in each class, not reach the minimum stated, the organisers have the right to either cancel the event or to amalgamate classes where necessary
- 14.2 Final Instructions and any other information will be available on Sportity before the event.
- 14.3 Entries can only be made online at rallies.info and are strictly on a first come, first served basis.
- 14.4 Entrants are required to indicate on the Entry Form their eligibility for the various classes/ championships.
- 14.5 The order of starting will be at the Organisers discretion but, to assist seeding, entrants should provide their previous results on the Entry Form.
- 14.6 Competitors are advised that the information they provide will be stored in a computer system and may be used for organisational and publicity purposes.
- 14.7 The Entry Fee is £850. The maximum number entries for the event is 140, the minimum will be 100. The event will operate a reserve list, as required.
- 14.8 The entry fee will include -
- One Printed Roadbook
 - One set of Reconnaissance Decals
 - All Obligatory Organiser's Competition Car Panels & Plates
 - Access to the SPORTRAXX app for reconnaissance tracking
 - Loan of a Safety Tracker from SPORTTRAXX for the event
 - A contribution towards the environmental and sustainability policy for the event.



Black door numbers will **NOT** be provided, however orange side window numbers WILL be provided
14.9 Entries will **NOT** be accepted until the entry form is completed and payment made in FULL. Entry forms with 'TBC' or similar entered within any mandatory field, will be deemed to be incomplete.

14.10 Entries can **ONLY** be made via the online entry form and payment can **ONLY** be made by BACS. Payments should be made to;

Cheltenham Motor Club
NatWest Bank Sort Code 60-05-16
Account Number 19540124
This is a Business Account

Please use driver surname and initial as the reference

14.11 Refunds for withdrawn entries will be as follows:

Up to 9.00am on Monday 1st September 2024 : entry fee less £50.00 administration fee.

After 9.00am on Monday 1st September 2024 and up to 23.59 on Monday 9th September entry fee less £100.00 administration fee.

After 23.59 on Monday 9th September 2024 any refund will be at the organiser's discretion.

14.12 Cancellation of entries must be made by e-mail, to the Entries Secretary. These will be acknowledged within 3 days. Verbal withdrawals will not be accepted. If the event is cancelled for any reason entry fees will be refunded less any unavoidable expenses up to a maximum of £20 per crew.

14.13 Any refunds due to a withdrawn entry will be issued asap, which may not be before the event.

14.14 Once a competitor has made an entry on the online entry form and has had that entry acknowledged, the competitor may not change the driver. Changes to the co-driver and/or vehicle are permitted up to the point of the final instructions being issued, after which only the car or the co-driver may be changed.

14.15 Should a competitor be involved in an incident causing third party damage they are liable to pay the Motorsport UK insurance excess, currently £450 if a claim is made or the actual cost of the damage should it be less than the current excess amount. Either way a copy of the invoice will be provided to show what payments have been made

R.A. SWANN LTD

**A Complete Service to Industry
Groundwork Specialists
Plant Hire • Demolition**



Timbers • Clockhouse Drive • Great Hallingbury • Bishop's Stortford • Herts CM22 7UE

Tel: (01279) 656404 • Fax: (01279) 506044

www.raswann.co.uk



SR15: SERVICE

15.1 The following Health & Safety statement MUST be shown to all your personnel.

“Every person participating in the Hills Ford Stages, whether employed or voluntary shall take reasonable care for the safety of themselves and other persons, who may be affected by their actions or omissions during the operation of the event.”

This is your responsibility and by completing the event entry form you are acknowledging this fact.

15.2 Service Vehicles will remain in the Service Area in Much Marcle. Service crews may service competing cars only within the bounds of the specified service area. The service area will be accessible only to service vehicles as declared on the entry form.

15.3 There is only one official service area at Much Marcle. The address for this is;

Rye Meadows
 Much Marcle
 Herefordshire
 HR8 2LX
 (overcomes.allow.landed)

15.4 All servicing work carried out and the carrying of fuel in the Service Vehicle should comply with any appropriate Health & Safety Executive recommendations.

15.5 Competing crews may work unassisted on their own cars in “No Service Areas” except: -

- (a) Within 100 meters of any control.
- (b) Between the SSA/TC control and the SSS control.

15.6 Service crews are subject to the same regulations as competitor’s regarding noise, bad driving manners, etc. Officials and Marshals have been instructed to note any infringements of the rules

15.7 The use of Motor Homes, trailers and service vehicles larger than a long wheelbase van must be discussed with the Entries Secretary.

15.8 Each crew will be allocated an area approx. 10m by 10m for servicing. If a service crew is looking after more than one vehicle, please email us advising which start numbers (or receipt numbers if seeding has not yet been published) you have been allocated. This will allow us to plan the service area.

15.9 Main service will be on a grassed area with good drainage, competitors will need to provide their own solid blocks for jacks and stands.

15.10 Competitors must supply an environmental ground sheet, which must be placed under the competing vehicle during any service activities to protect the surface from spillage etc.

15.11 Service crews will only be allowed to leave the service area to recover their own vehicle which has retired.



Forged Pistons
Cylinders
Engine Bearings



Con Rods
Crank Shafts



Forged Pistons



Cast Pistons
Piston Rings

Main Bearings
Big End Bearings



Valves



Valve Train

Head Studs

Conrod Bolts

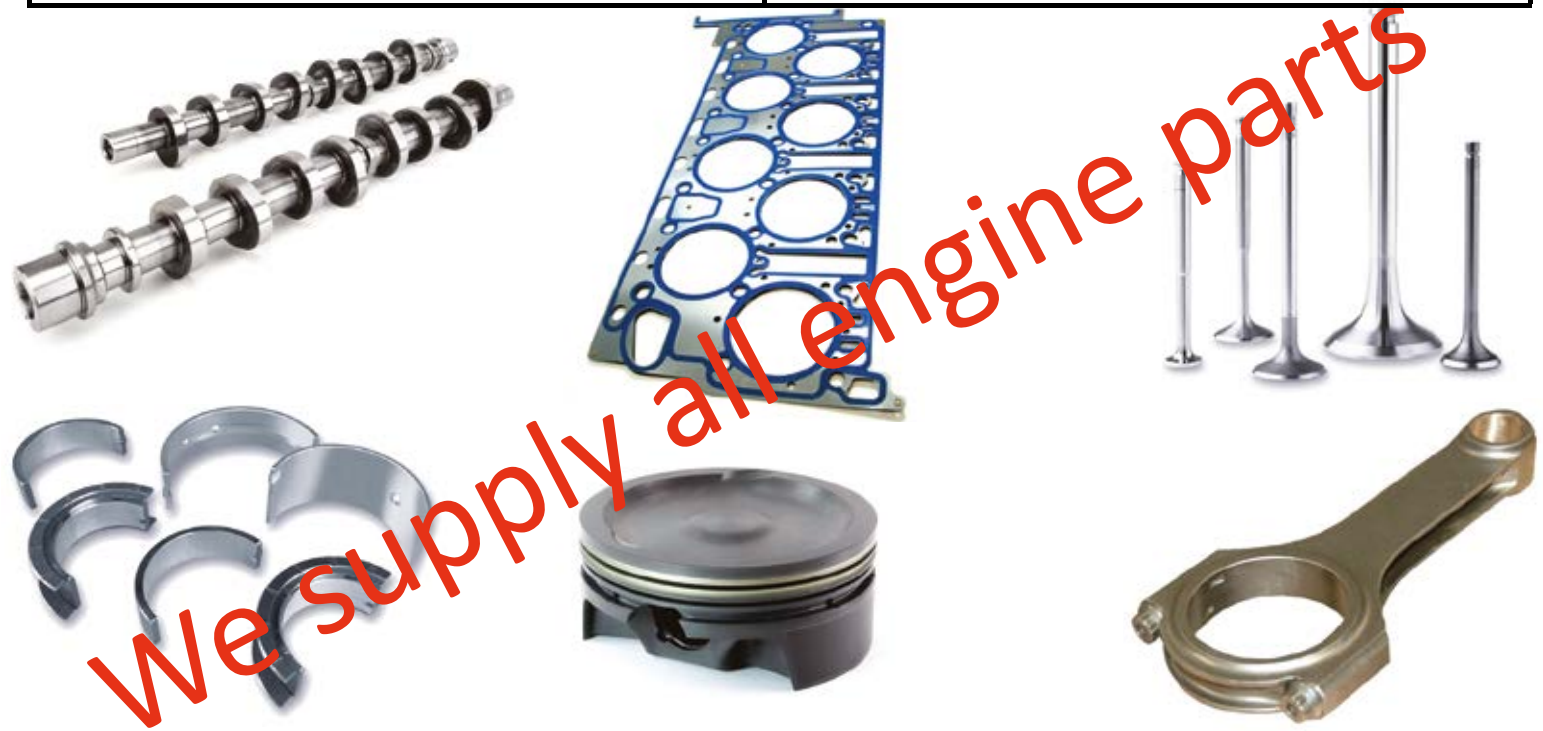


Main Studs

Forged Pistons



Piston Rings



We supply all engine parts

distributors of all leading brands of engine components including





VITAL EQUIPMENT REFUEL TEAM

The Vital Equipment Refuel Team dispense competitively priced Super Unleaded & race fuels directly into your rally car at the official event refuel zone.

RALLY REFUEL SERVICE

OUR BRANDS



T: 01981 241169

WWW.VITALEQUIPMENT.CO.UK





15.12 The speed limit in the Service Area is 10 mph.

15.13 Camping will be available within the service area from 12:00 Friday 13th September, but competitors are reminded that they must be self sufficient, as facilities are very limited.

15.14 Management vehicles (chase cars) are not permitted. Anyone found using a management car will be reported to the Clerk of the Course. The maximum penalty will be disqualification.”

SR17: REFUEL AND FUEL

17.1 Competitors are only permitted to use fuel that complies with the definition of ‘pump fuel’ as in section B ‘Nomenclature and Definitions’ in the 2024 Motorsport UK Yearbook.

17.2 A refuelling service will be provided by Vital Equipment dispensing less than 1 mile from the service area. Alternatively, competitors will be allowed to refuel strictly within their own designated service area, subject to the service guidelines being adhered to.

17.3 The designated area for refuelling via Vital Equipment will be located within the car park of The Royal Oak Public House, Ross Road, Ledbury, HR8 2ND, this will be shown in the road book. It is recommended to book with Vital Equipment prior to the event. Please contact them direct to discuss your requirements on 01981 241169, e-mail: orders@vitalequipment.co.uk or visit www.vitalequipment.co.uk We would encourage all competitors to use these facilities; especially as the use of an on-event Refuelling Rig improves safety for competitors and their support teams.

17.4 Additional time has been added to the schedule for the road section to allow for refuelling.

17.5 Refuelling of rally cars must always be in accordance with Health & Safety Guidelines. Competitors are reminded of all safety regulations. The penalty for contravention will be disqualification.

17.6 Each service crew must have a minimum 4.5 litre/9kg capacity hand-operated fire extinguisher and a minimum 7 litre spill kit, in addition to those carried in the competing car.

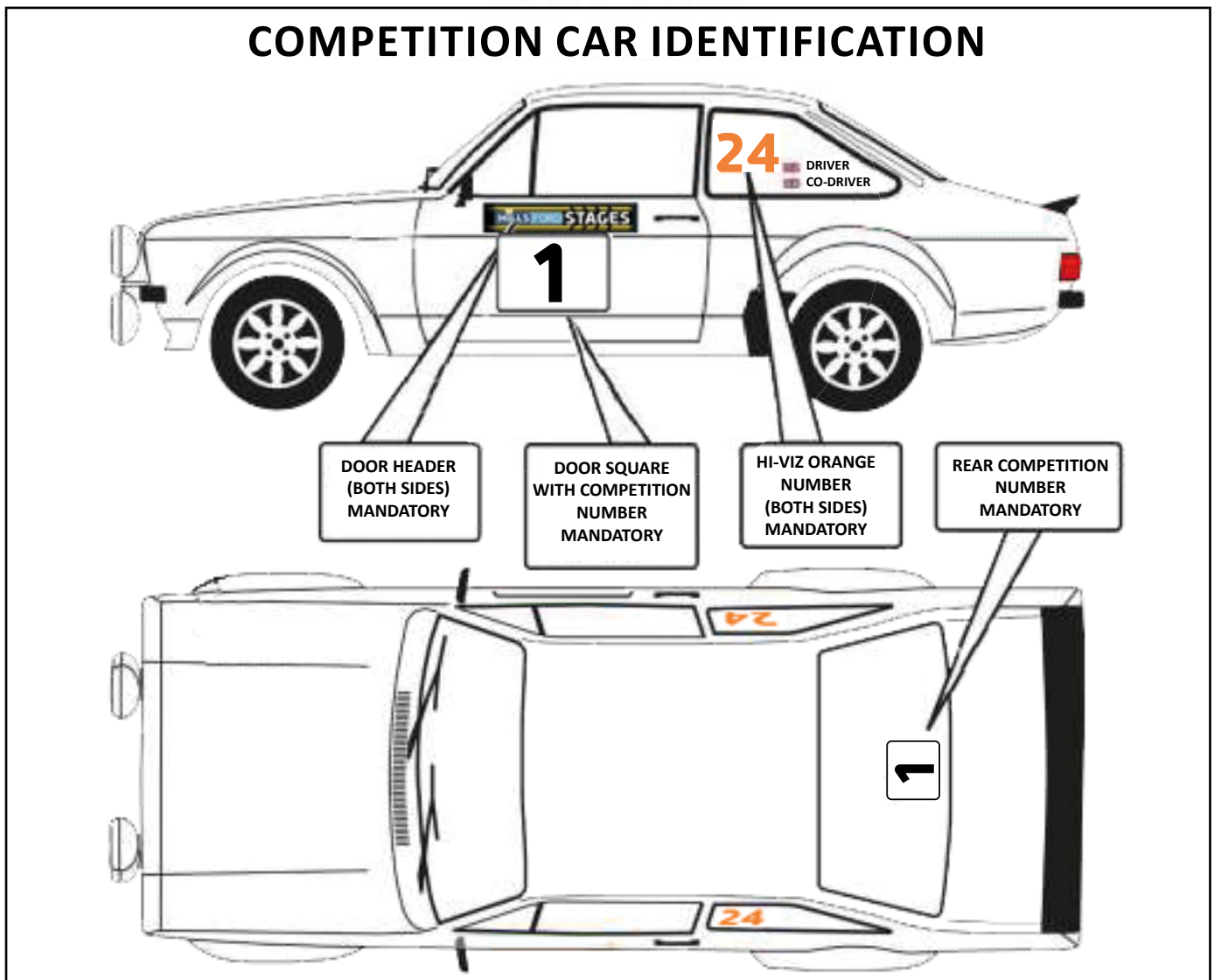
17.7 There must be no occupants in the rally car at any time whilst it is being refuelled.



SR18: IDENTIFICATION

Competitors must display front door panels, on both sides of the car conforming to R 6.1.3(a) & J.4 (Traditional Style door headers and numbers). Competitors are reminded that these numbers must be removed after the event, or upon retirement.

Vehicle and event identification items will be provided by the Organisers and must be fixed to the vehicle as per the diagram. A list of these will be provided in the Final Instructions. Note min. 23cm **black door numbers will not be provided.**





Horse Trailer Refurbishment
Horse Trailer Sales and Hire



Classic Car restoration
Rally & Race Preparation

Call Andy on 07801 749623

www.andylandy.co.uk



SR19: CONTROLS, TIMING AND PENALTIES

19.1 The Event will commence with MC0 leaving the service area to drive to the Ceremonial Start in Ledbury town centre on Saturday afternoon.

19.2 The event will be run using the Target Timing system as defined in R 31.2.1 of the General Regulations with the following amendments:

Maximum Permitted Lateness will be 15 minutes between MC0 and MC1 (Saturday 14th September) and 15 minutes between MC2 and MC6 (Sunday 15th September) R 31.2.5) This will be penalty free (R 31.2.6. There will be no permitted free lateness between MC1 and MC2

Competitors may be required to make up time at rest & service halts (R 32.1.1)

19.3 All stages will run at one-minute intervals, except for SS1 and SS2 which will start at 30 second intervals and run concurrently. The event has applied to use 30 second starts across the entirety of the event, in case of delays.

19.4 Competitors may re-join the rally after missing a Control or Special Stage at any Special Stage Arrival, or other time control. Before doing so, permission must be obtained from a CLO, who will advise where and when to re-join. A competitor cannot rejoin at a higher number than originally allocated. Any competitor whose car has been damaged may be required to be examined by a scrutineer before being allowed to re-join.

19.5 It is the competitor's responsibility to ensure that the times are correctly recorded on their timecard. Should any recorded time not be legible or not appear authentic, the Organisers may use any means at their disposal to establish a time. The organisers reserve the right to amend a recorded time if in their opinion, after reference to check sheets, a mistake has been made.

19.6 Special stages will run at 30 seconds or one minute intervals and be started by the use of electronic start lights showing 15, 10, 5 seconds to go followed by a countdown to zero.

19.7 All Penalties will be applied as per R 32.2 and see Appendix 1, Chart 32.2

SR20: RESULTS

Interim results will be available throughout the day via Rallies.Info A link to the live results will be published on the official noticeboard. Provisional results will be posted on Sportity as soon as possible following the end of the event. If competitors have a query regarding the interim or provisional results, they should complete a results query form.

Any official protest must be lodged in accordance with C5.



SR21: INSURANCE – REIS

21.1 Vehicles must have a valid motor insurance policy which provides as a minimum Third Party Liability cover that complies with the Road Traffic Act. This can either be covered by extending an existing motor policy to cover the event, or, by purchasing additional cover provided under the Event Road Section Scheme. If a competitor has an extension to their existing policy, they will be required to confirm that the motor insurance complies with the requirements of the Road Traffic Act. Any responsibility for a fraudulent or misleading declaration about existing cover lies with the competitor.

21.2 Drivers with their own insurance must declare that they have appropriate cover which provides, as a minimum, Third-Party Liability cover and complies with the Road Traffic Act.

21.3 The Organisers have applied to REIS for a Blanket Cover Note under the above scheme. This will provide competitors who need to use the scheme with the Third Party Cover necessary to meet RTA requirements on the Road Sections of the event. **The cost for this cover will be £34.00.**

21.4 All applicants wishing to use the scheme must be able to comply with all points of the REIS Declaration:

- is aged 19 years or over
- has held a full driving licence for a minimum of 6 months
- has no more than 6 points on their licence
- has had no more than 1 fault claim in the last 3 years
- is a named driver on a valid motor insurance policy for the vehicle they are driving
- do not have the Third-Party Extension cover on their existing motor policy
- the vehicle has a valid MOT and taxed for the road, unless exempt from doing so

21.5 Anyone aged less than 19 years old will also be accepted at the same price should their co-driver be a more senior member of their family or over 25. Any competitor who falls outside these parameters may be offered cover at equivalent terms or an agreed price, if approval from the Appointed Insurance Broker has been obtained by the event organisers, prior to the event. Approval can be sought by sending an email to contact@reis.co.uk and provide the Drivers' name and date of birth, the date they passed their driving test and details of any motoring claims and/or convictions. Additional cover provided by this scheme is only effective whilst the vehicle is actively competing in the event and remains under the control or direction of the event organiser(s). Cover will cease immediately if you are precluded, excluded or retire from the event.

21.6 The Event Road Section scheme is provided by Reis Motorsport Insurance and underwritten by First Underwriting Limited.

Reis Motorsport Insurance is a trading name of Kingfisher Insurance Services Limited. Authorised and regulated by the Financial Conduct Authority No. 310218. Registered in England and Wales No. 01469545. Registered Office: 768 Hagley Road West, Oldbury, Warley, West Midlands, B68 0PJ.



SR22. DOCUMENTATION

22.1 Driver and Co Driver must report to Signing-on on Saturday 14th September, to present to the Entries Secretary valid and eligible licenses, membership cards and road insurance declaration. A process card confirming successful completion of noise and scrutineering will need to be handed in to the entry secretary in order to receive timecards. Please ensure your information has been completed accurately and in full on the rallies info system before you arrive at signing on.

Signing on will be located at Much Marcle Garage, we ask that you leave your vehicle in the service area and walk to the garage in order to avoid congestion.

SR23. NOISE TEST AND SCRUTINEERING

23.1 All vehicles must comply with the 2024 Motorsport UK Technical Regulations. Scrutineering will take place next to Much Marcle Garage. ///rejoiced.replayed.thrilled

23.2 On-board video cameras may be carried in competing cars in accordance with J5.21. These cameras must be fitted before scrutineering and the recordings may be required to be made available to the organisers, Motorsport UK or the Police should an investigation into an incident be required.

SR24. SAFEGUARDING

Cheltenham Motor Club's Policy Statement on Safeguarding

- Safeguarding is everybody's responsibility.
- All competitors, volunteers and attendees at the event have a responsibility to respond positively in response to any concerns, suspicion or disclosure that may suggest a person is at risk of harm.
- All suspicions and allegations of inappropriate behaviour will be taken seriously and responded to swiftly and appropriately.
- If you have any concerns about safeguarding while at this event please contact the Club Safeguarding Officer, Kevin Smith 07831 419985, or report it to an official named in the Supplementary Regulations who will instruct the Club Safeguarding Officer to contact you urgently.

SR25. ENVIRONMENT AND SUSTAINABILITY

For organisers and events such as the Hills Ford Stages, there is an increasing need to act on mitigating the associated environmental impacts such as the carbon footprint. Such action is necessary to ensure the continued support of our stakeholders and the communities our event relies on. Several events have begun to take such steps to help to make motorsport and the environment more sustainable for the future.

There is an expectation from the Local Authorities in which the event operates, to see a localised approach to sustainability. As a result, the event is working with local sustainability initiatives within the three counties of Worcestershire, Herefordshire and Gloucestershire. A proportion of the entry fee will be used to help fund these local initiatives.



SR26. TYRE VENDOR

JD Tyres will attend the service area in Much Marcle. For pre orders call John on 07968020546

MORAN

MOTORHOMES

МОТОРНОМЕС

CALL: 01584 876911



Moran Motorhomes is a small family run business situated in Ludlow, Shropshire. We specialise in high quality motorhomes, both new and used, and generally hold around 25 new vehicles and 20 pre-owned units. If we do not have the exact vehicle you are looking for we can generally locate it. We, also, undertake servicing on all types of vehicles and carry out MOT's on petrol and diesel vehicles up to class IV.

- A good selection of new & used in stock
- On site services and accessory fitting facilities
- Class IV MOT's
- Motorhome finance available
- All used vehicles covered by our own warranty






www.moranmotorhomes.co.uk
 Orleton Road | Ludlow Business Park | Ludlow | Shropshire | SY8 1XF
 email: info@moranmotorhomes.co.uk



Acknowledgments

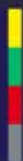
Hills Ford
Moran Motorhomes
SFP Store
Hartpury Farms
RA SWANN Ltd
AlliSport
HAWK Security
Andy Landy Motorsport
M.A.R Motorsport
R.J. Matthews
Ledbury Town Council
Herefordshire, Worcestershire & Gloucestershire County Councils
All the impacted District, Parish and Ward Councils
Malvern Hills Trust
Much Marcle Garage
The Royal Oak Public House
The Championship Co-ordinators
Martin Saunders, RLO Gloucestershire
RLO West Mercia
Silverstone Rally School
Institute of Advanced Motorists
British Rally Marshals Club
Another Day In Orange
Gwynne Speed
Andy Ruck
All residents and businesses on and around the route
All volunteer officials, marshals and safety teams and the many motor clubs who support us with
volunteers and equipment
The hard working organising team



We all represent the sport.
Let's make sure we're setting
a good example



motor
sport
UK



**RACE
WITH
RESPECT**

#RaceWithRespect